

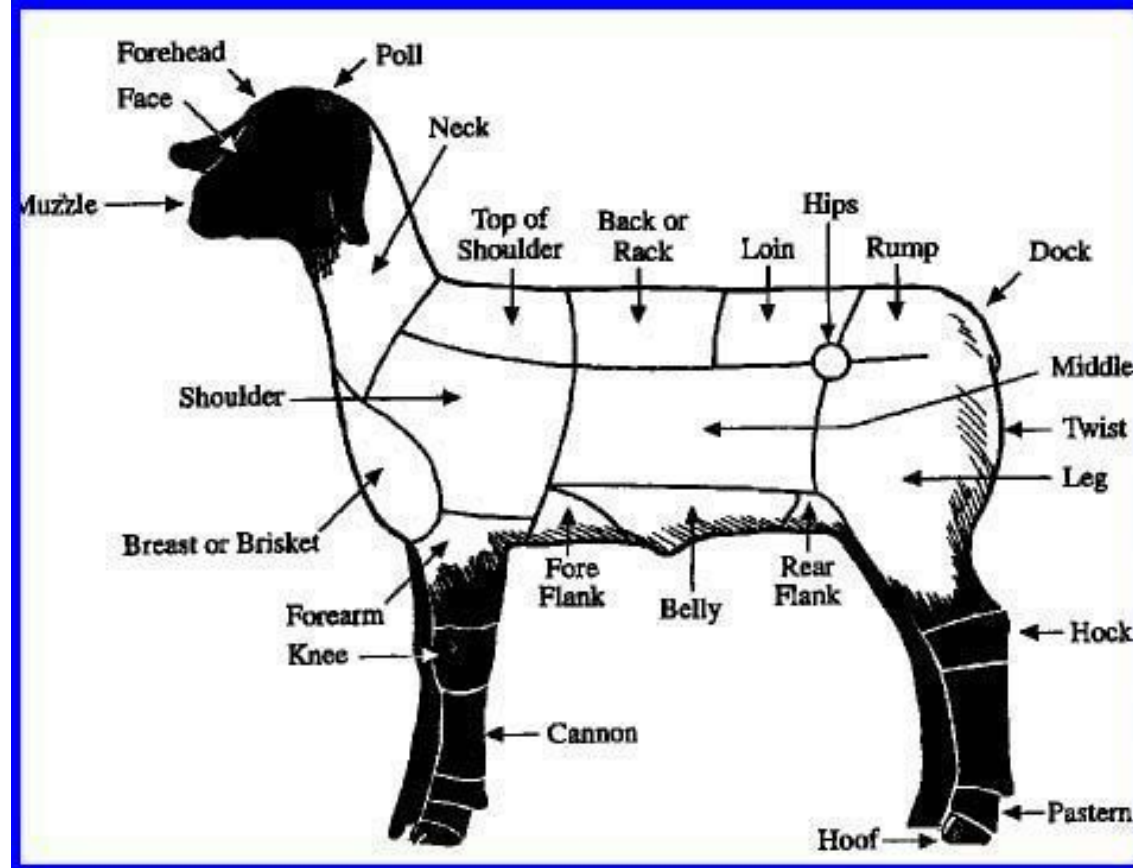


# Junior Stockman's Club/Skillathon: Animal Parts Identification

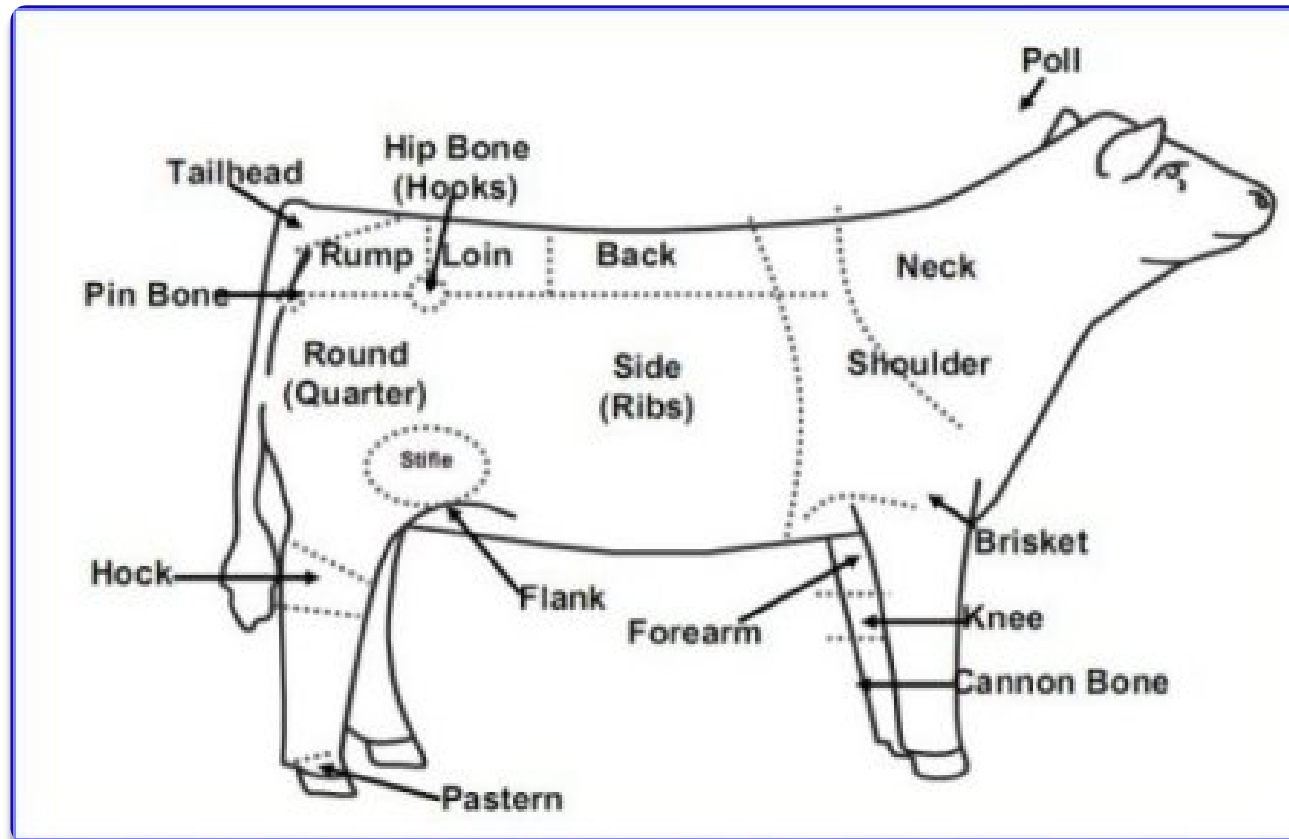
GARY D. FIKE

COUNTY EXTENSION DIRECTOR

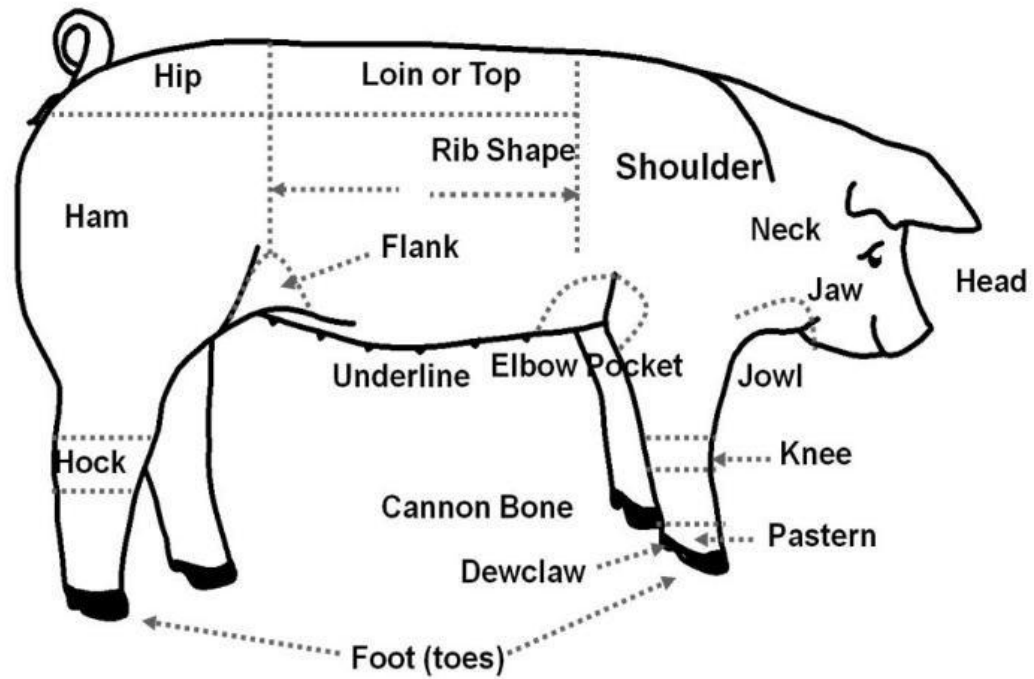
# Parts of a Lamb



# Parts of a Beef Animal



# Parts of a Hog



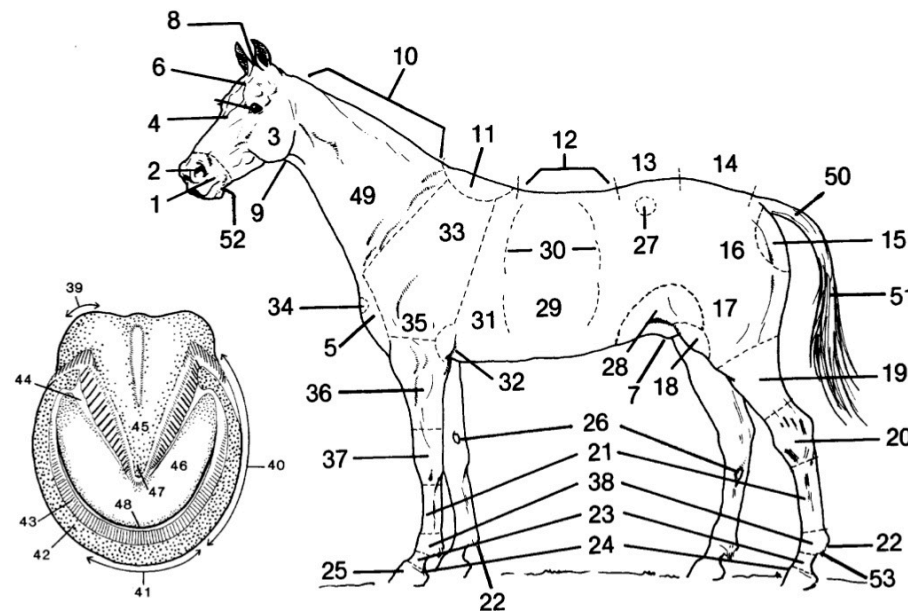


# Parts of a Horse

\$1.00



## Parts of a Horse



- |                   |                       |
|-------------------|-----------------------|
| 1. Muzzle         | 27. Point of hip      |
| 2. Nostril        | 28. Flank             |
| 3. Cheek          | 29. Ribs              |
| 4. Face           | 30. Barrel            |
| 5. Chest          | 31. Heart girth       |
| 6. Forehead       | 32. Elbow             |
| 7. Sheath         | 33. Shoulder          |
| 8. Poll           | 34. Point of shoulder |
| 9. Throat latch   | 35. Arm               |
| 10. Crest         | 36. Forearm           |
| 11. Withers       | 37. Knee              |
| 12. Back          | 38. Fetlock joint     |
| 13. Loin          | 39. Bulb of frog      |
| 14. Croup or rump | 40. Quarters          |
| 15. Buttock       | 41. Toe               |
| 16. Quarters      | 42. Wall              |
| 17. Thigh         | 43. Laminae of wall   |
| 18. Stifle        | 44. Bar               |
| 19. Gaskin        | 45. Frog              |
| 20. Hock          | 46. Sole              |
| 21. Cannon bone   | 47. Apex of frog      |
| 22. Fetlock       | 48. Whiteline         |
| 23. Pastern       | 49. Neck              |
| 24. Coronet band  | 50. Dock              |
| 25. Hoof          | 51. Tail              |
| 26. Chestnut      | 52. Chin groove       |
|                   | 53. Ergot             |