

# Riley County Extension Youth Enrichment Spring 2021

Programs and resources provided by:

**K-STATE**  
Research and Extension

Riley County

**Riley County Extension Office  
110 Courthouse Plaza, Rm B220  
Manhattan, KS 66502**

**785-537-6350  
www.riley.ksu.edu**



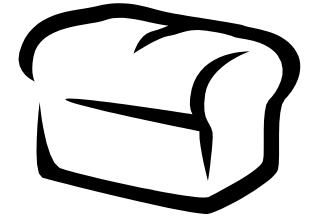
Supplemental Youth Activities for  
Educators and Community Leaders

K-State Research and Extension is an equal opportunity provider and employer and is committed to making its services, activities and programs accessible to all participants. If you have special requirements due to physical, vision, or hearing disability, or a dietary restriction please contact the Riley County Extension Office at 785-537-6350.

Dear Educators,  
 Our supplemental activities and kits will provide exciting hands-on and wellness policy requirements. All of our classes/kits will be scheduled office and ask that you return them to the school office for pickup. Questions, contact the **Riley County Extension Office 785-537-6350**.

	Pre-K	K	1
<b>Ant Science</b>			
<b>Book in a Bag</b>		X U	X U
<b>Chick Embryology</b>			X
<b>Clean Hands</b>		X	X U
<b>E.A.R.T.H.</b>			
<b>Economics</b>		X U	X U
<b>4-H Gardening</b>			
<b>Fractions and Measurement</b>			
<b>Frog Embryology</b>		X	X U
<b>From Larva to Butterfly (spring)</b>		X	X U
<b>History Trunk</b>			
<b>Mealtime Manners</b>	X U	X U	X U
<b>Plants in the Classroom</b>			X
<b>Pumpkins</b>			X
<b>Severe Weather</b>			
<b>Wheat Science</b>			
<b>X - All schools in Riley County</b>			
<b>U - USD 383 Manhattan-Ogden</b>			

# Wheat Science



**Grades 3-6**  
 For USD #383 - Grade 6

Making a loaf of bread in the classroom? What better way for children to learn about the action of yeast! Each child will have a mini-loaf at the end of this experience. Included is a DVD that shows how wheat is grown, harvested and processed; its nutritional value and role in the world food supply, and its economic importance. USD 383 and MCS classroom will be taught remotely. RCGS and FHCS classroom lessons will be taught by Extension staff.

KCCRS: Matter, Energy, Organisms and Ecosystems,  
 Life Science: Middle School: 2.1; 3.1

# E.A.R.T.H.



**Grades 5-9**  
 For USD #383 - Grades 5-8

Earth Awareness Research for Tomorrow's Habitat (E.A.R.T.H.) is an environmental education program for upper elementary school students. Students learn about water, land, air, and living resources through hands-on activities and experiments. In the spring, there is a hands-on student workshop for all participants. The program includes lesson plans and the materials for all experiments and activities.

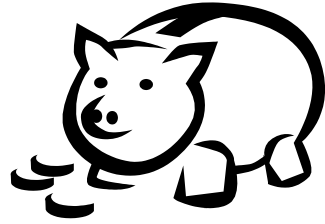
**For more information or to sign up, contact Brandy bmerg@ksu.edu**

KCCRS: Earths' Systems: Earth Science: Middle School: 2.1; 3.1

# Economics

## Grades K-6

For USD #383 - Grades K-6



**Grades K-2:** Do you have money on your bookshelf? This program uses a variety of storybooks and lessons to teach good money management. Also included are other lessons such as the Allowance Game. Learn about economics, how it affects our lives and the world around us. Learn how to make smart economic choices.

**Grades 3-6:** Are you ready for the real world? Find out as you test your readiness with lessons like the Spending Game, an adapted lesson from the Real World curriculum and other activities. Learn about economics, how it affects our lives and the world around us.

HCCRS: HGSS: Economics

## Kansas 4-H Life Skills

### •Healthy Interpersonal Relationships

Getting along with others and interacting with people of all ages

### •Sound Decision Making

Making choices based on applying what is known in a productive way

### •A Positive Self Concept

Believing you are capable and can be successful

### •An Inquiring Mind

Asking questions and knowing how to obtain information

### •Concern for the Community

Becoming aware of and working towards improving one's community

learning for your students and help you meet state academic standards on a first come, first serve basis. They will be left for you in the school Programs can also be delivered to teachers teaching remotely.

2	3	4	5	6
X U	X	X		
X U	X	X	X	X
X				
			X U	X U
X U	X U	X U	X U	X U
X U	X	X	X	X
		X U		
	X U	X U		
	X U			
X U	X U	X U		
	X U			
X U	X U			
X	X U			
X U	X			
	X U			
	X	X	X	X U

# Book in a Bag

## Grades K-1

Check out a Book in the Bag program to present to your class. Each lesson will include an age-appropriate book with a nutrition theme, parent page, activity and recipe. Also provided is a lesson guide to walk you through presenting the program with ease. Contact us to get a list of books. RCGS and FHCS classroom lessons will be taught by Extension staff.



# Clean Hands

## Grades K-2

For USD #383 - Grade 1

Children learn how well they wash their hands by rubbing with special glow germ liquid, washing, and then checking their hands under an ultraviolet light to see how many spots they missed. For USD 383 and MCS classrooms, the kit will be dropped off and taught by the classroom teacher. RCGS and FHCS classroom lessons will be taught by Extension staff.

By Grade 2:

Science Standard 6 - Science in Personal and Environmental Perspectives



# 4-H Gardening

## Grade 4 (8-week program, Spring 2021)

For USD #383 - Grade 4

A fun-filled, hands-on gardening experience for children to grow, harvest and try new and different foods. Growing fruits and vegetables at home or school provides an environment to educate youth about horticulture, nutrition, and leadership.

Students will learn: how to garden for optimum plant growth, production and food quality; how different fruits and vegetables provide essential vitamins and minerals the body needs to be healthy; and how to handle and prepare their garden harvest. The classes are taught by Extension Agents Gregg Eyestone and Megan Dougherty, with assistance from Extension Master Gardener volunteers. USD 383 and MCS classroom will be taught remotely. RCGS and FHCS classroom lessons will be taught by Extension staff.

Lessons:

- ▶ P.L.A.N.T.
- ▶ Make Your Pick
- ▶ Planting the Garden
- ▶ Six Nutrient Categories
- ▶ Food Labels
- ▶ MyPlate Food Groups
- ▶ Garden Care
- ▶ Harvest & Celebration



Riley County Extension programs present useful information related to agriculture, home economics, youth development, family life, business and economics, healthy living, and much more.

Our philosophy is to help people help themselves by taking university knowledge to where people live, work, play, develop, and lead. We work at being responsive to the needs of the people by focusing our resources on providing quality information, education and problem-solving programs for real concerns.

4-H

STEM Programming  
Expanded Youth Programs  
Volunteer Development

Soil Testing  
Master Gardeners  
Pest Management  
Water Conservation

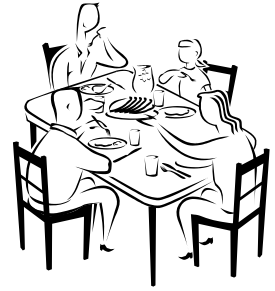
Medicare programming  
VITA Tax Assistance Program  
Community Development  
Family Resource Management

Health  
Nutrition  
Food Safety  
Radon Testing Kits

Water Quality  
Farm Management  
Youth Tractor Safety  
Wildlife Damage Control

**Riley County Extension**  
**110 Courthouse Plaza Rm B220**  
**Manhattan, KS 66502**  
**785-537-6350**  
**[www.riley.ksu.edu](http://www.riley.ksu.edu)**

# Mealtime Manners



**Grades K-2**  
**(Fall Only)**

Students will learn and practice good mealtime manners and basic table setting. Proper manners help children feel good about themselves, improve food habits and increase social skills. Having manners at mealtime creates a pleasant eating experience for everyone. For USD 383 and MCS classroom the kit will be delivered and the lesson taught by the classroom teacher. RCGS and FHCS classroom lessons will be taught by Extension staff.

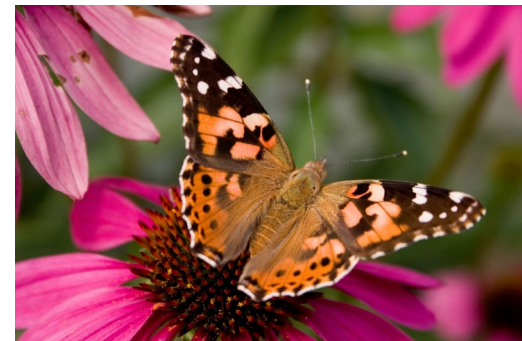
KCCRS: HGSS: Civics: Grade 1: Families

# From Larva to Butterfly

**Grades K-2** (*One program per school, spring only*)  
For USD #383 - Grade 1

Watch larvae turn into butterflies in this four-week unit. The Extension office will provide a cage and the larvae for a minimal cost.

KCCRS: Interdependent Relationships in Ecosystems  
Grade 1: Life Science: 1.1; 1.2; 3.1





# Pumpkins

**Grades 1-3**  
For USD #383 - Grade 2

Students learn about the life cycle of pumpkins. The program includes a poster, book, project book, and pumpkin seeds.

KCCRS: Interdependent Relationships in Ecosystems: Life Science  
Grade 2: Life Science 2.1  
Grade 2: Life Science 4.1

# Economics

**Grades K-6**

**Grades K-2:** Do you have money on your bookshelf? This program uses a variety of storybooks and lessons to teach good money management. Also included are other lessons such as the Allowance Game. Learn about economics, how it affects our lives and the world around us. Learn how to make smart economic choices.

**Grades 3-6:** Are you ready for the real world? Find out as you test your readiness with lessons like the Spending Game, an adapted lesson from the Real World curriculum and other activities. Learn about economics, how it affects our lives and the world around us.

HCCRS: HGSS: Economics



# History Trunk

**Grade 3**

Discover more about the history of Riley County and Manhattan. This program includes information on communities including Ogden, Riley, Leonardville and various Manhattan neighborhoods, pictures, and presenter information.

This program is a partnership between the Riley County Historical Museum and Riley County Extension and can be followed up by a tour of the Riley County Historical Museum, Goodnow House and Hartford House.

KCCRS: HGGS: Grade 3: Community

# Severe Weather

**Grade 3**

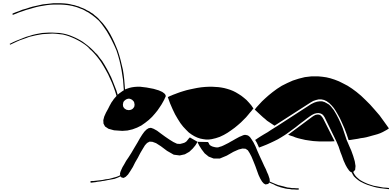
As they say if you don't like the weather in Kansas, wait a bit and it will change. Ever changing weather brings the threat of thunderstorms, tornados, snowstorms and heat. Students will learn what to do when faced with different weather situations and will learn about weather conditions they may not experience in Kansas such as hurricanes and monsoons.



Includes DVDs, pictures, procedures and contact information for presenters. This program is a partnership between Riley County Emergency Management and Riley County Extension.

KCCRS: Grade 3: Science: Weather and Climate: 2.2; 3.1

# Ant Science



**Grades 2-4**

For USD #383 - Grade 2

Using an observation ant farm will help students learn about the world within the ant colony. Additional resources include fact sheets on anatomy; the roles of male, queen, and worker ants; and the benefits/problems ants cause in agriculture industry, the home and in nature. Ants will be provided for a minimal cost.

KCCRS: Interdependent Relationships in Ecosystems: Life Science  
Grade 2: Life Science: 4.1

# Plants in the Classroom

**Grades 1-3**

For USD #383 - Grade 3

Six lesson plans to introduce students to the world of plants. Also included are a poster, online resources, root view kit, seeds and pellets that promote quick growth. New activities involving *Farmer George Plants a Nation* and *Thomas Jefferson Grows a Nation* by Peggy Thomas are included.

KCCRS: Interdependent Relationships in Ecosystems  
Grade 3: Life Science 4.1; 4.3; 4.4

# Fractions and Measurement

**Grade 3**

Students will develop and strengthen their knowledge of fractions and measurement through art, activities and games. Materials for activities provided.

KCCRS: Math. Number and Operations: Fractions; 3.1; 3.2; 3.3  
Measurement and Data: 2.1; 2.3; 2.4

# Chick Embryology

**Grades 1-5**

For USD #383 - Grade 2

Watching chicks hatch is a fascinating experience for students. The Extension office provides the incubator, eggs (for a small cost), online resources, and written instructions.

KCCRS: Interdependent Relationships in Ecosystems  
Grade 2: Life Science 1.1



# Frog Embryology

**Grades K-4** (*One program per school,  
fall and early spring only*)

For USD #383 - Grades 2 - 4

Have you ever watched frog eggs change into frogs? Students will get to observe this transformation during the 9 week unit. The Extension office will provide the frog eggs (for a small cost), instructions, and activity book

KCCRS: Interdependent Relationships in Ecosystems; Inheritance and Variations of Traits: Life Cycle and Traits

Grade 3: Life Science: 1.1; 4.3; 4.4

Grade 4: Structures, Function & Information Processing: 1.1





4-H'ers participate in



**5M**  
ANNUALLY  
SCIENCE  
PROJECTS



**2.5M**  
ANNUALLY  
HEALTHY LIVING  
PROJECTS



**2.5M**  
ANNUALLY  
CITIZENSHIP  
PROJECTS

Helping guide youth ages 5-19 as they learn more about their community (Citizenship); be a role model and teach others (Leadership); and explore interest areas that will offer ongoing learning (Life Skills).

To learn more about Riley County 4-H and learning and leadership opportunities for youth, please contact the Riley County Extension Office 785-537-6350 or visit [www.riley.ksu.edu](http://www.riley.ksu.edu).

**K-STATE**  
Research and Extension



Riley  
County

**4-HERS ARE NEARLY 2X MORE LIKELY TO ACTIVELY CONTRIBUTE TO THEIR COMMUNITY**

**4-H CLUB MEMBERS RANGE IN AGE FROM 5-18**

**4-HERS ARE NEARLY 5X MORE LIKELY TO GRADUATE COLLEGE**

**4-H STANDS FOR HEAD HEART HANDS HEALTH**

**4-HERS ARE NEARLY 3X MORE LIKELY TO PURSUE A CAREER IN SCIENCE**

**4-H PROGRAMS OPERATE THROUGHOUT MORE THAN 150 COUNTRIES**

**4-HERS ARE NEARLY 7 MILLION 4-H CLUB MEMBERS IN THE UNITED STATES**

**4-HERS ARE NEARLY 2X MORE LIKELY TO BE PHYSICALLY ACTIVE THAN NON 4-H MEMBERS**

**4-HERS ARE NEARLY 2X MORE LIKELY TO PURSUE A CAREER IN SCIENCE OR COMPUTER TECHNOLOGY**

© 2013 University of Illinois Extension